



Bat@Edge

Real-time on-device classification of bat and bird calls

TDFE 2025 Blaubeuren

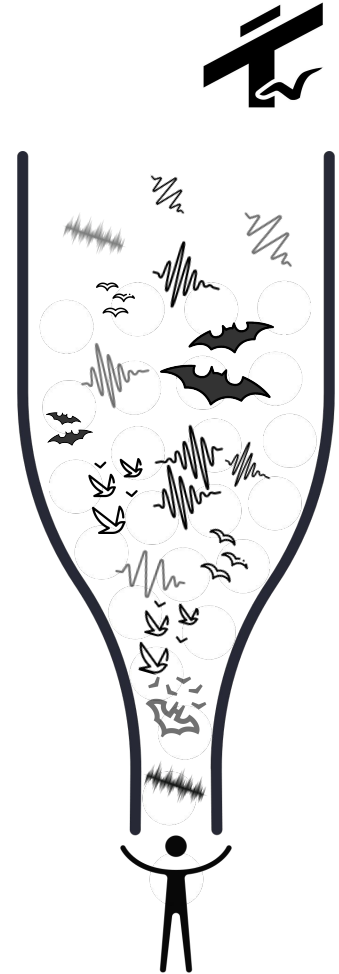
Dr. Jannis Gottwald, Dr. Artur Sterz, Dr. Jonas Höchst & Markus Vogelbacher

Motivation

Scalable solutions for the permanent monitoring of bats are urgently needed.

Acoustic monitoring is THE (non-invasive) method for monitoring bats.

- **Problem:** Automatic recordings lead to huge amounts of data that have to be analysed retrospectively
 - ◆ Impossible to manage without the help of automatic classification software
 - ◆ Time-consuming reclassification necessary
 - ◆ Large time lag between recording and result
 - ◆ Permanent monitoring installations unthinkable at many locations over several years
- **Solution:** Real-time AI execution on the detectors in the field
 - ◆ Enables fast, flexible responses
 - ◆ Reduces data volume
 - ◆ Reduces human workload and enables long-term monitoring of multiple sites 24/7





What do we need?

The Bat@Edge Concept

- AI Model for the real-time recognition of **bats**, birds, amphibians, locusts...
 - needs to be fast, and precise with low computational power demands
- Power-autonomous stations equipped with AI-capable computing unit
- Operating system that allows for real-time data transmission and flexible configuration to reduce data

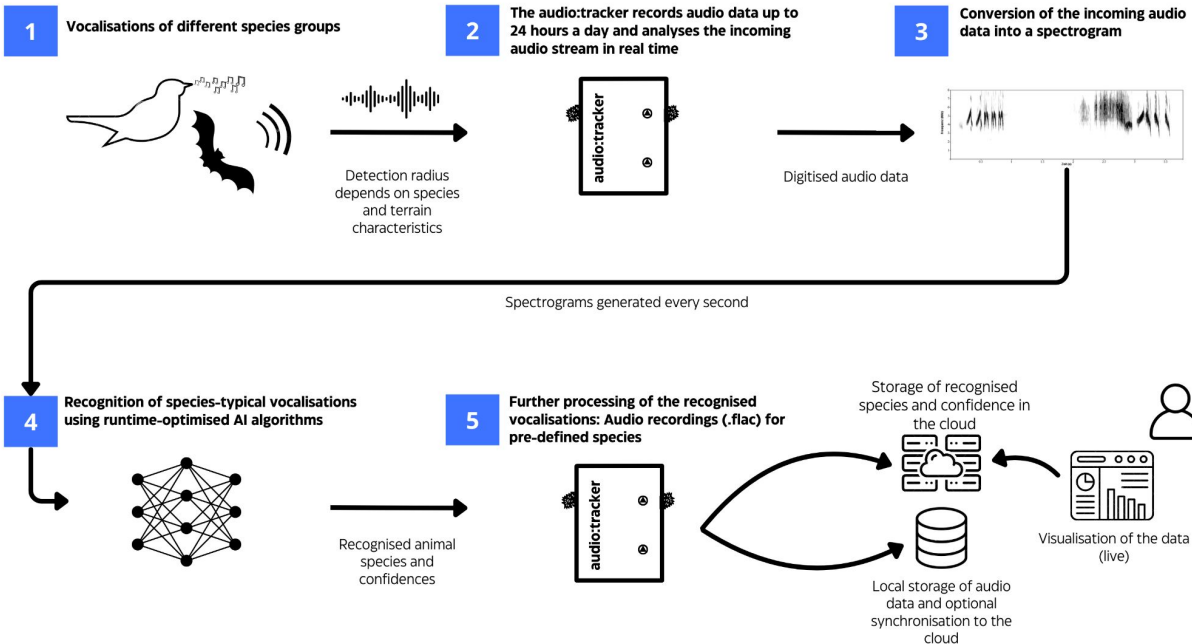


audio:tracker

Flexibly configurable intelligent real-time audio monitoring system

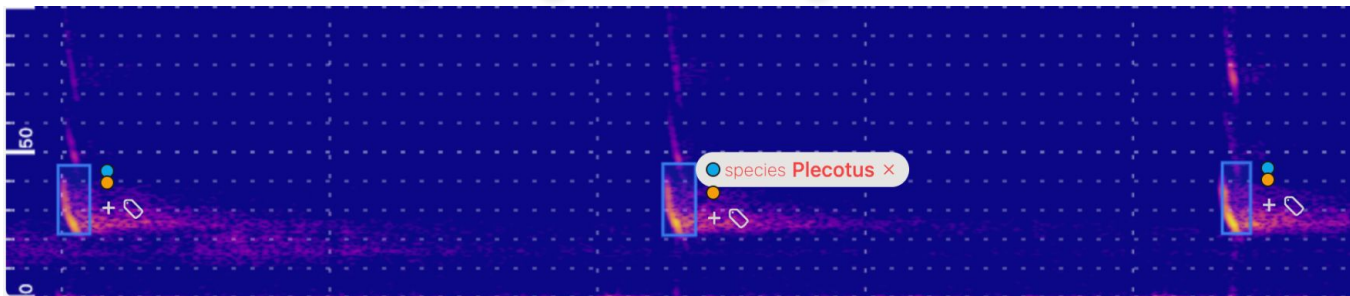


Real-time detection of vocalizing species with the audio:tracker



audio:tracker

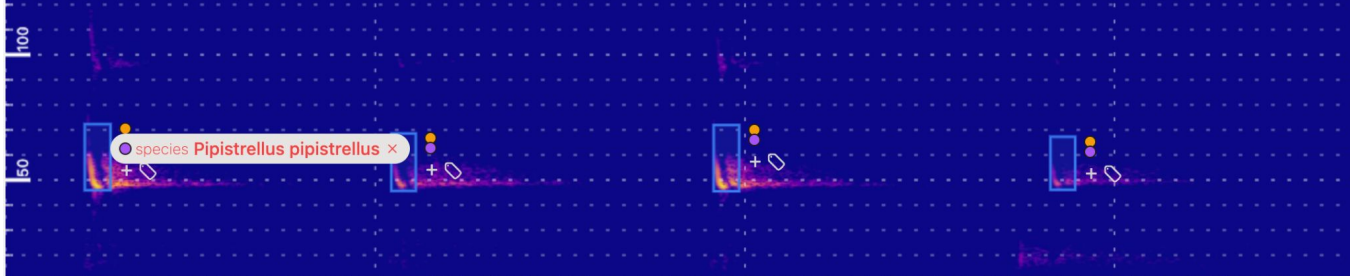
Flexibly configurable intelligent real-time audio monitoring system



→ Save everything as an audio file



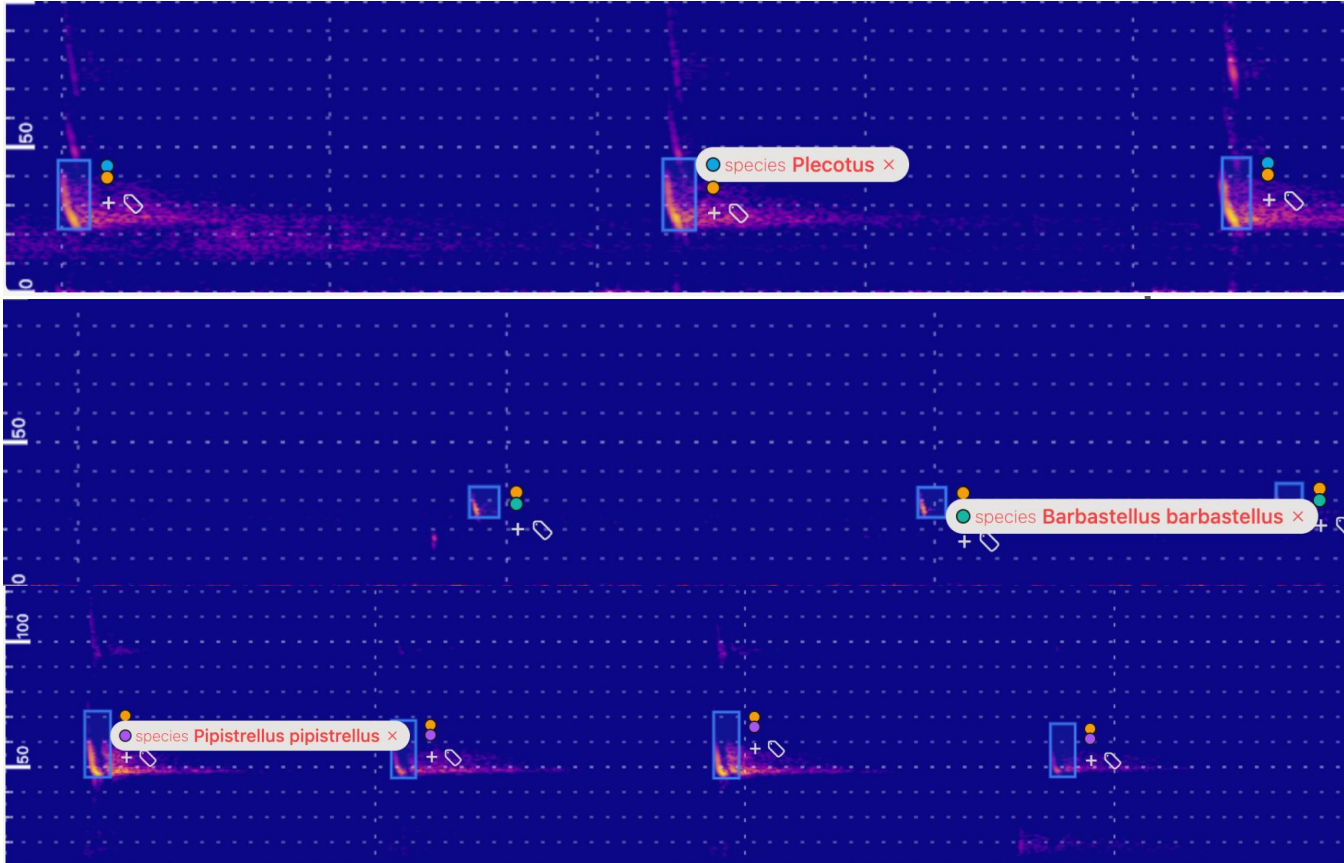
→ Save everything > 70% confidence as an audio file



→ Save 10% of the calls as an audio file

audio:tracker

Flexibly configurable intelligent real-time audio monitoring system



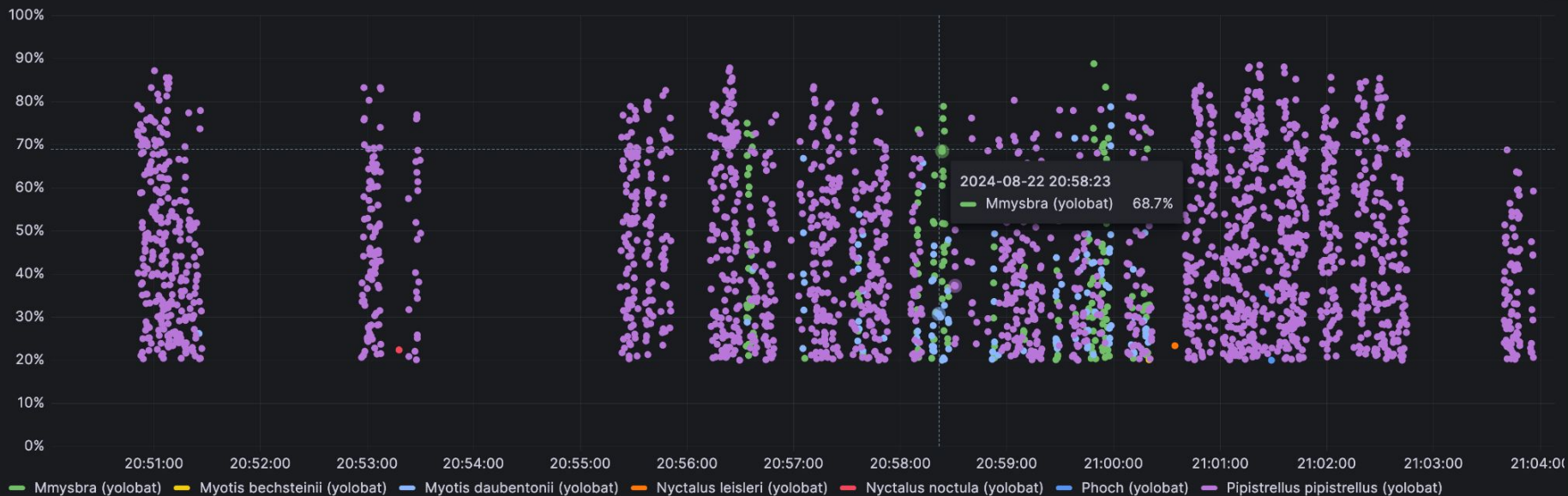
Detections
are sent
COMPLETELY
to the
backend

The Bat@Edge Concept



hefo-haiger-01

Recognition Confidence





YOLO:bat

State of the Art AI Model for the recognition of bat calls

YOLO11 (Ultralytics)

Highest accuracy, speed and efficiency in object detection and classification



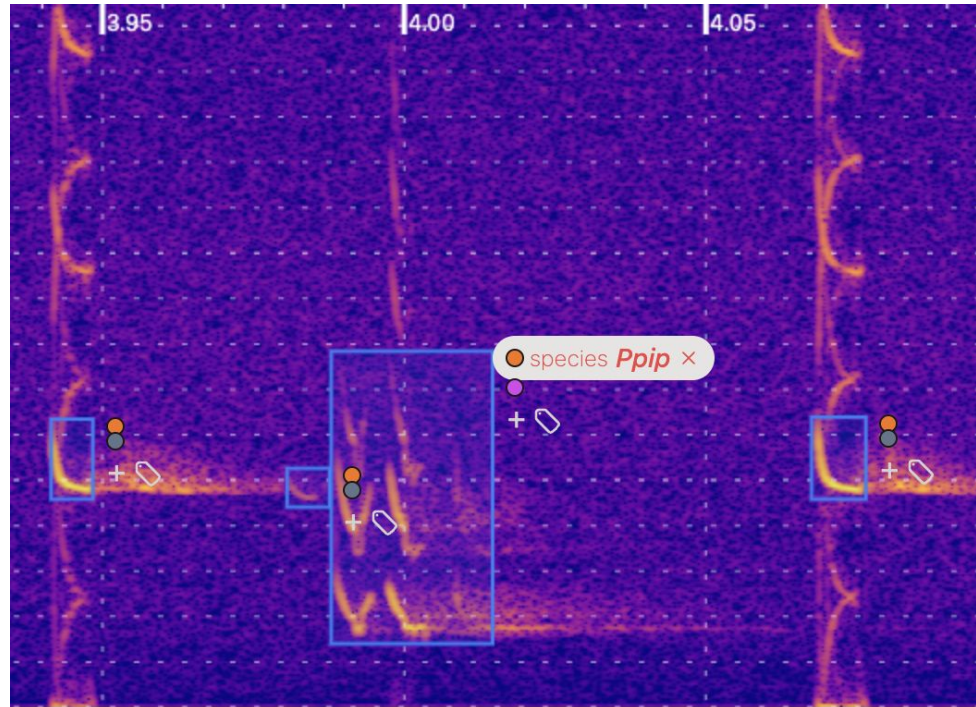


YOLO:bat

State of the art AI model for the recognition of bat calls

YOLO11 (Ultralytics)

Highest accuracy, speed and efficiency in object detection and classification





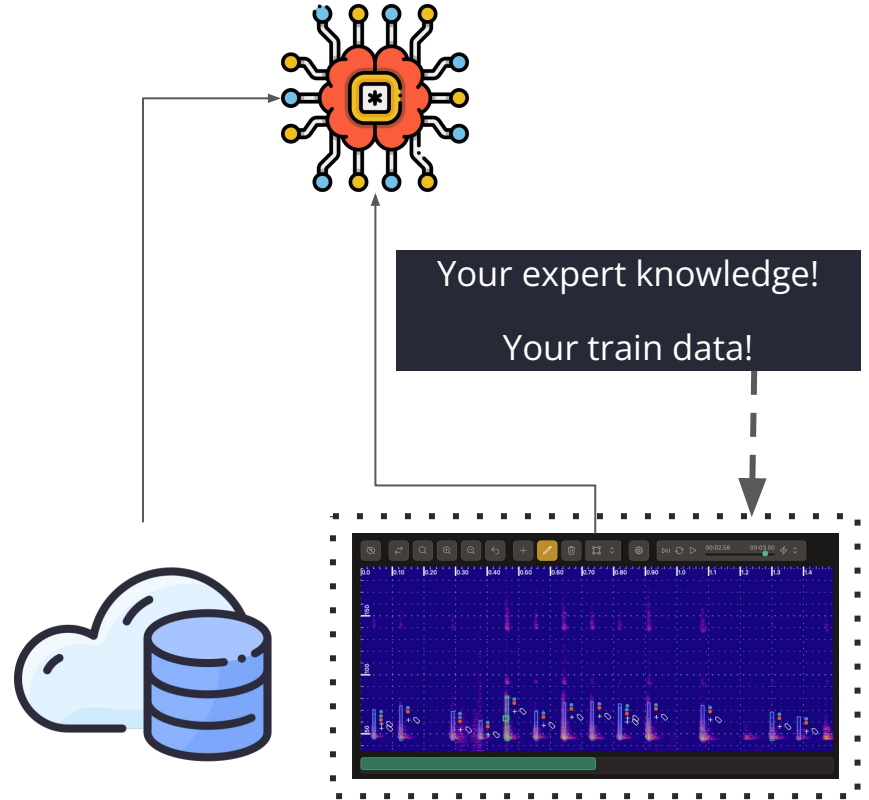
Getting better!

AI is not perfect:

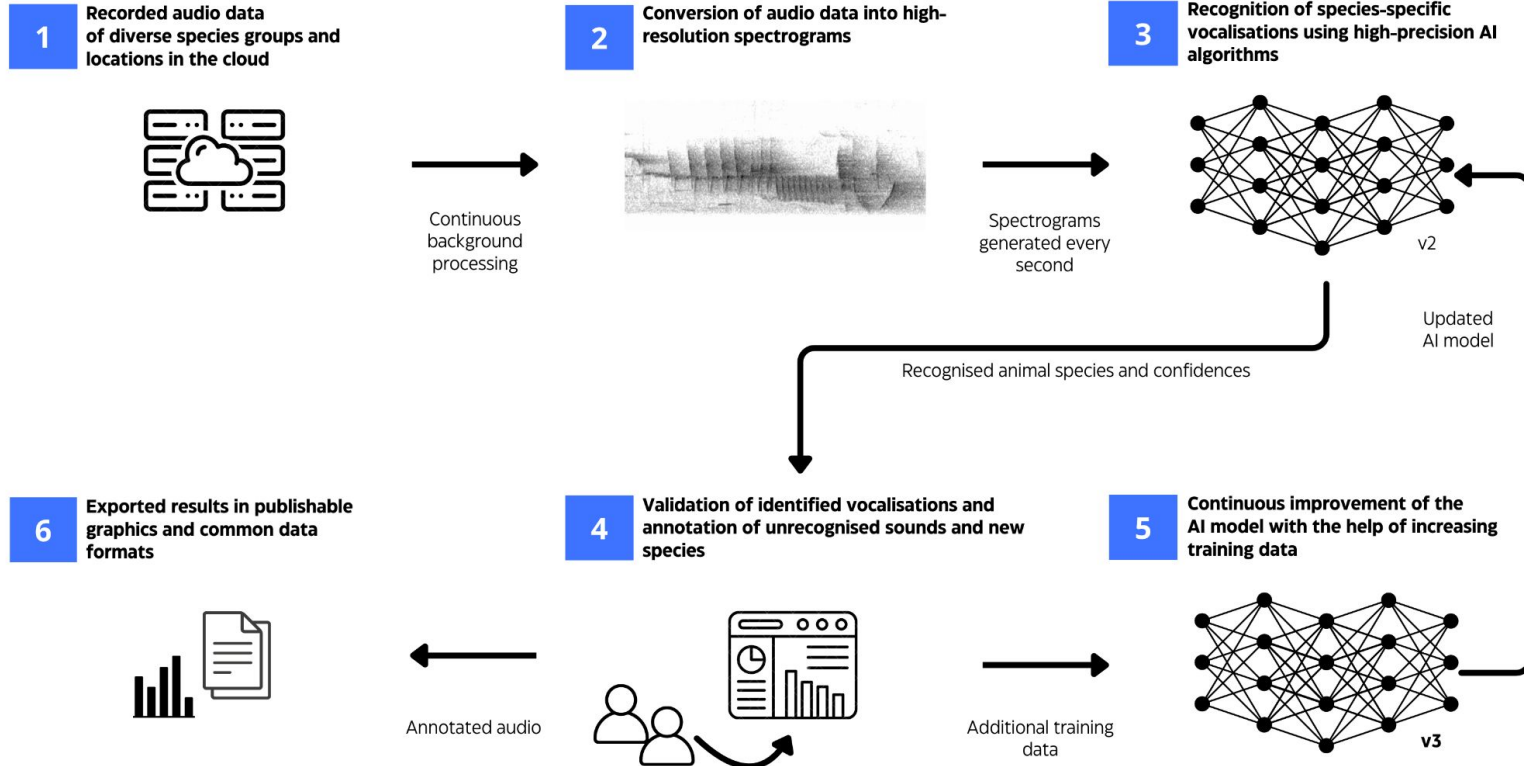
- ➡ Needs training data → **YOU!**
- ➡ Needs verification by experts → **YOU!**

Currently available:

- On-device AI for real-time classification
- Powerful server AI for the classification of data from other sources (BC, BL, Audiomoth...)
- Annotation tool for validation
 - Verified data goes back to AI
 - AI is constantly improving



Active AI learning process through automatic recognition and interactive validation of vocalizations



Field test

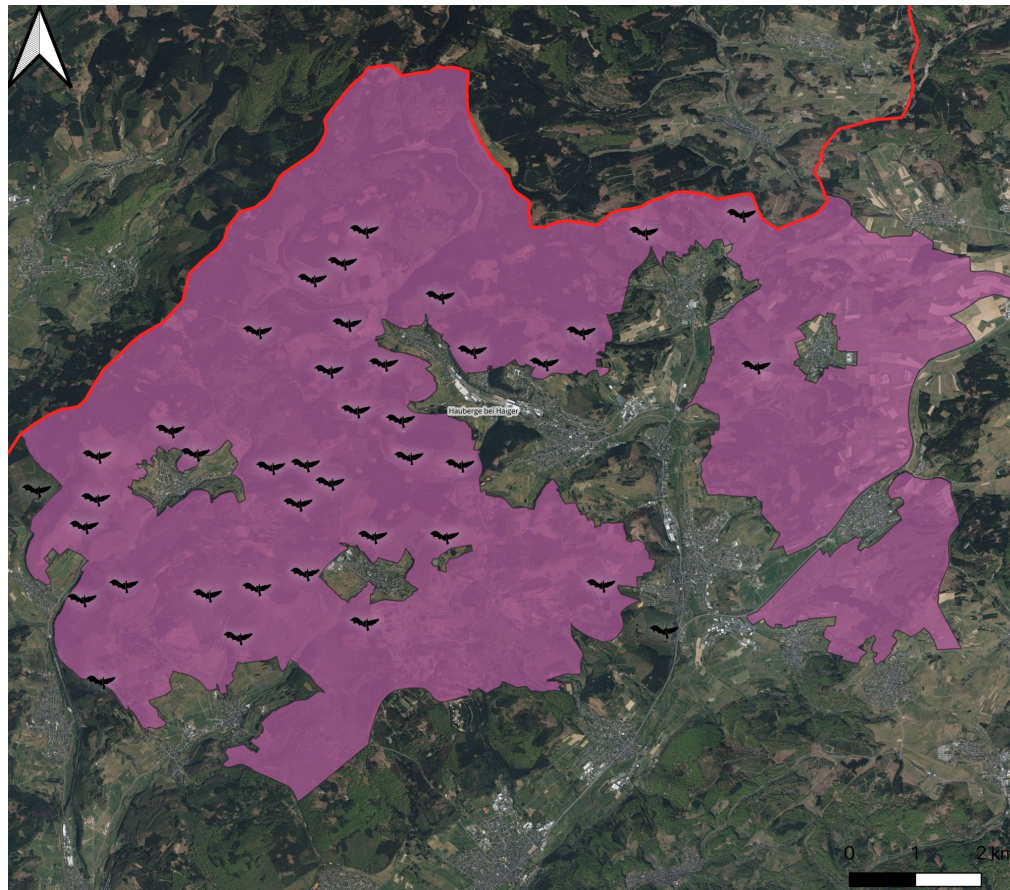
40 stations for bird and bat monitoring in the Natura200 area "Hauberge bei Haiger"

- Sunrise to sunset = birds
- Sunset to sunrise = bats

Financed by:



Für eine lebenswerte Zukunft



Field test



13 (15) Species

Barbastella barbastellus

Pipistrellus nathusii

Pipistrellus pipistrellus

Pipistrellus pygmaeus

Myotis brandtii/mystacinus

Myotis bechsteinii

Myotis daubentonii

Myotis nattereri

Myotis myotis

Nyctalus leisleri

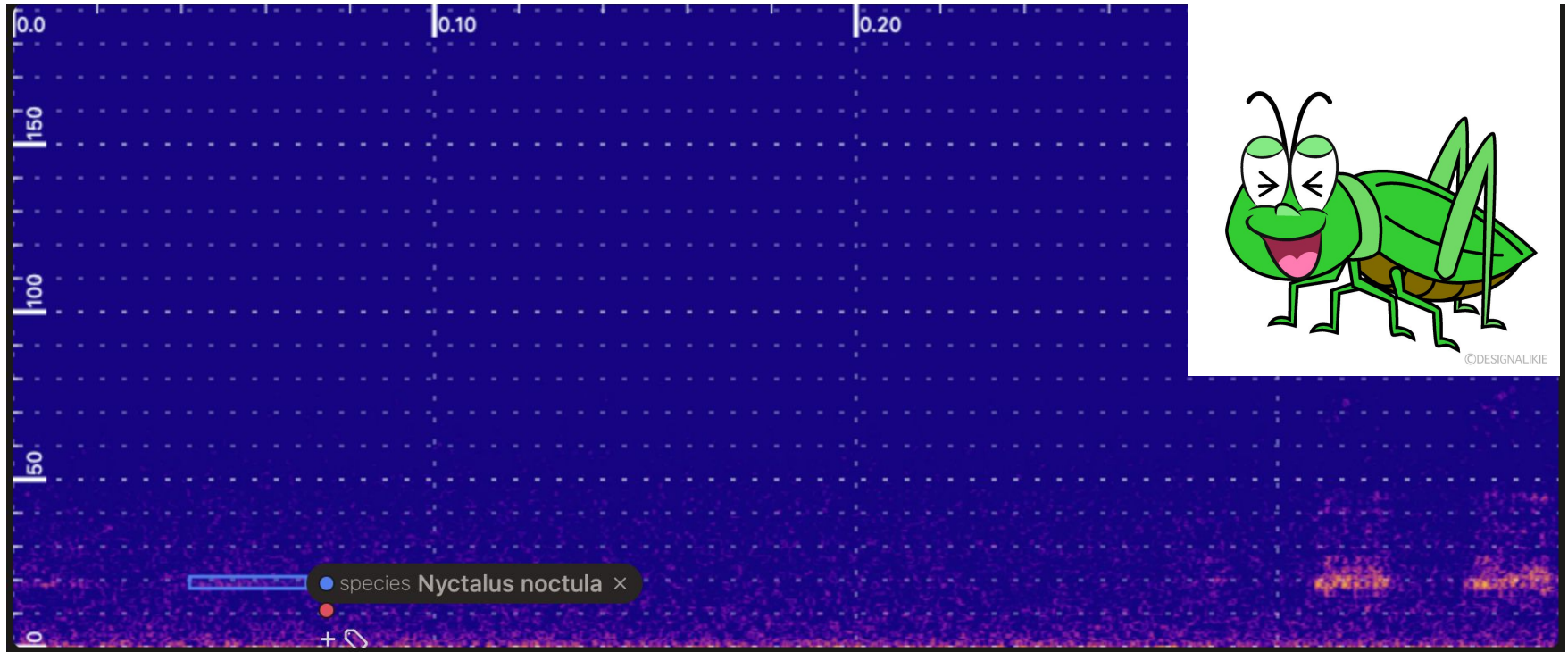
Nyctalus noctula

Eptesicus serotinus

Plecotus austriacus/auritus



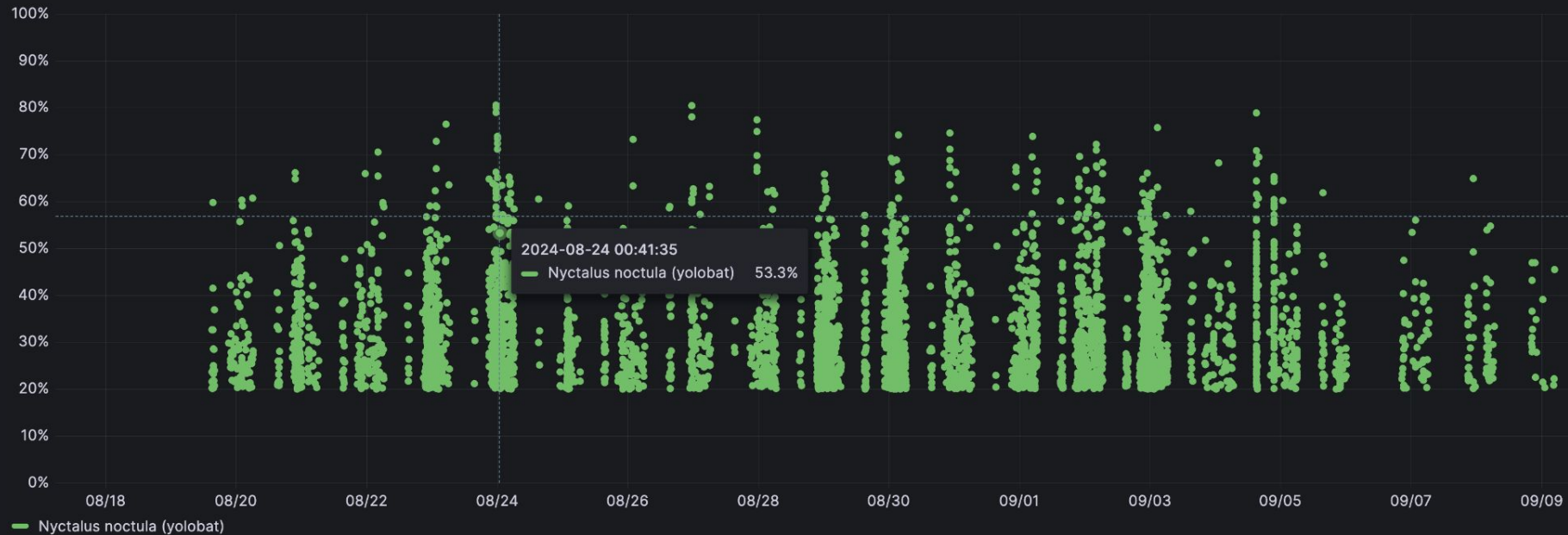
Field test



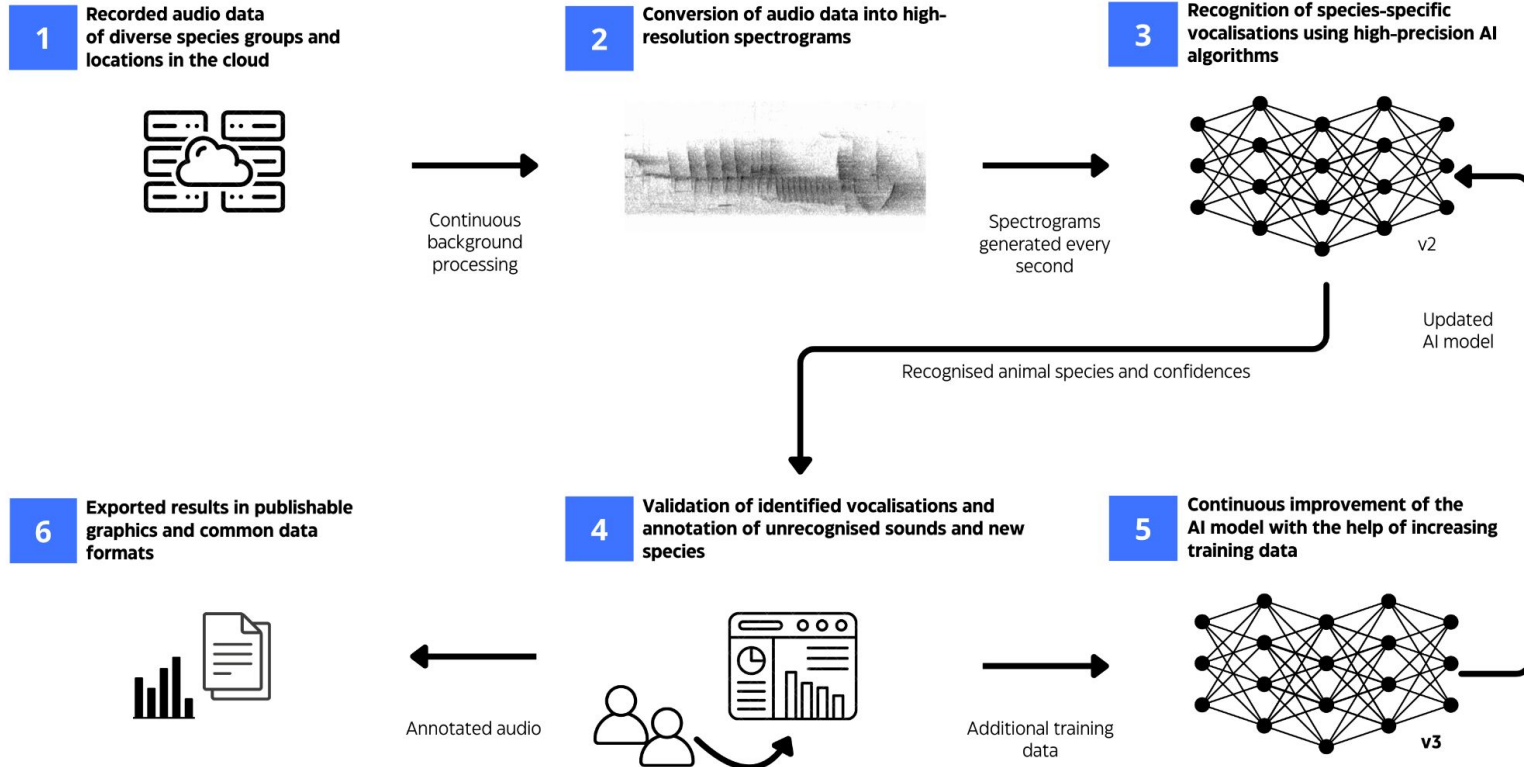
Field test



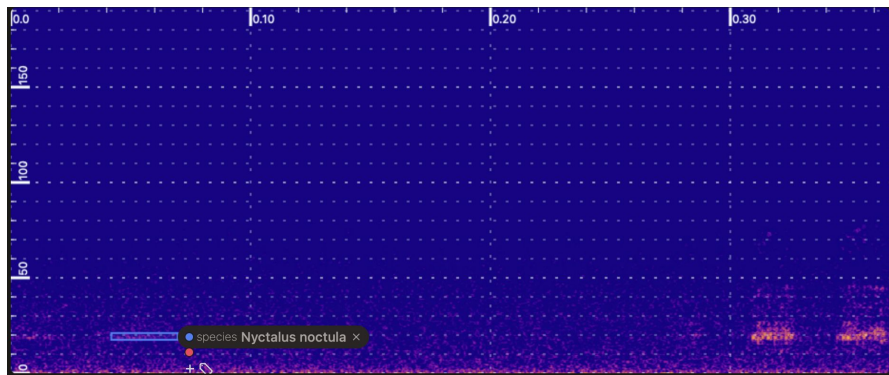
Recognition Confidence



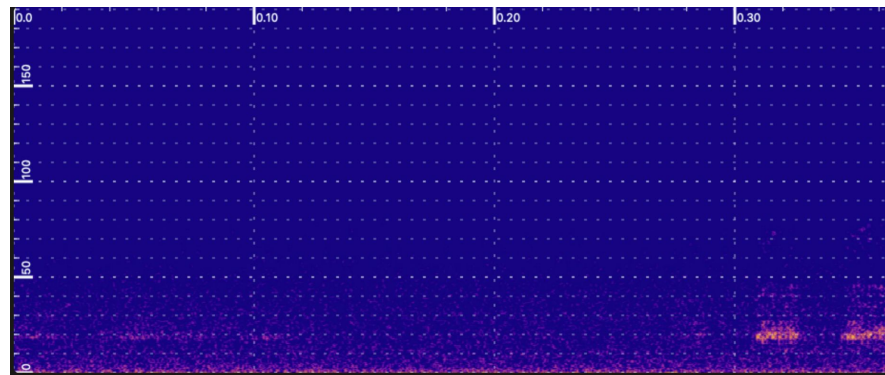
Active AI learning process through automatic recognition and interactive validation of vocalizations



Getting better!



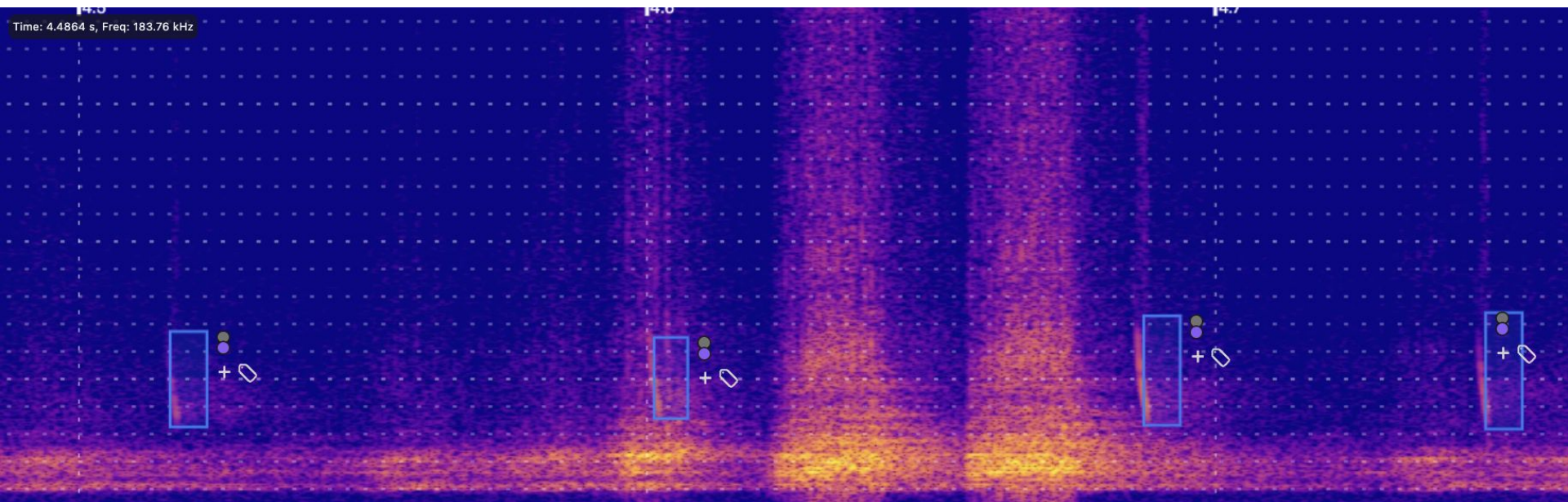
Old



New

Crickets

Getting better!



Conclusion



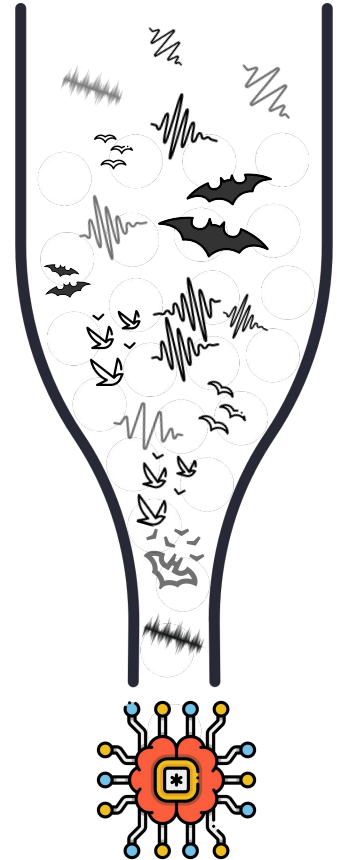
Real-time processing of animal voices:

- significantly reduces the amount of data to be analysed
- enables permanent monitoring installations
- allows timely detection of relevant events (migration?)
- is the future of acoustic monitoring

But: Must constantly improve!

Workshop on real-time acoustic ai: 11.02.2025

gottwald@trackit.systems



Thanks to:



Institut für Tierökologie
und Naturbildung

Anja Fritzsche

Kseniia Kravchenko

Birgit Gessner

Florian Gloza-Rausch

Thomas Meierkordt

Simon und Widdig

Simon Ripperger

Bernd Ohlendorf

Sarah Heine

Markus Milchram

Joern Horn

Landschaftsökologie
Moritz

...

Thank you!

Jannis Gottwald

Contact

trackIT Systems

Unterm Bornrain 4

35091 Cölbe

+49 15783538221

gottwald@trackit.systems

<https://trackit.systems>

